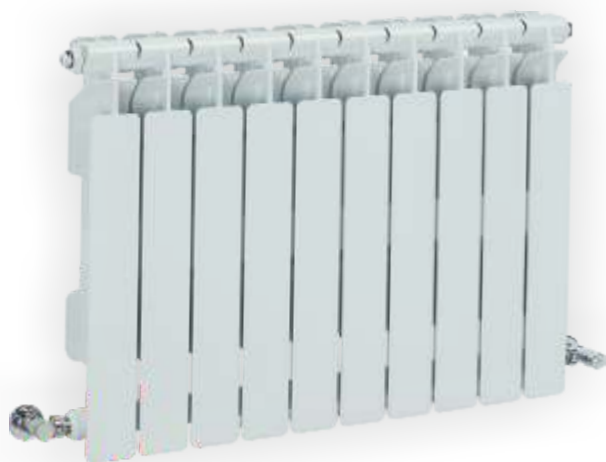


AQUATIC EXTRA



AQUATIC EXTRA



Estetica di Classe "A"

Il nuovo design del radiatore AQUATIC EXTRA nasce per soddisfare le esigenze di benessere delle tipologie abitative di ultima generazione (Classe "A" a basso consumo energetico).

"A" Class design

The new AQUATIC EXTRA radiator is designed to satisfy the needs of last generation house tipology (Class "A" low energy consumption).

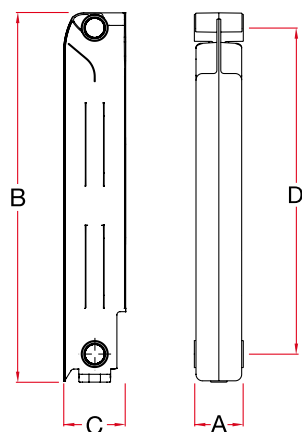


Informazioni tecniche / Technical information

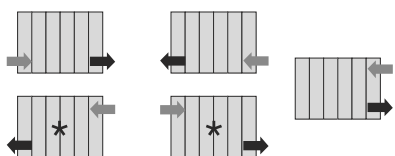
	altezza height (mm)	interasse centres (mm)	profondità thickness (mm)	larghezza width (mm)	H ₂ O water capa - city (lt)	peso weight (kg)	pressione esercizio operative pressure (bar)	resa termica ΔT 50 thermal power	
								(W)	(kcal/h)
AQUATIC EXTRA 350	416	350	96	80	0,25	1,06	20	89	77
AQUATIC EXTRA 500	566	500	96	76	0,30	1,13	20	96	82
AQUATIC EXTRA 600	666	600	96	76	0,32	1,29	20	112	96

AQUATIC EXTRA

Indicazioni per il montaggio / Assembly instructions



Connessioni / Joints



* Applicazione Consigliata / recommended application

Modello / Model	A mm	B mm	C mm	D mm
AQUATIC EXTRA 350	80	420	96	350
AQUATIC EXTRA 500	76	566	96	500
AQUATIC EXTRA 600	76	576	96	600

L = A x n° elementi / A x no. elements
i = L + 90 mm (standard)

